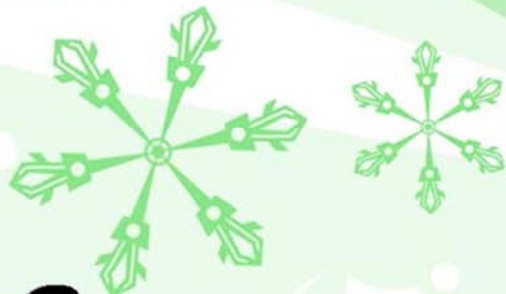


Bellingham Figure Skating Club's
14th Annual Winter Ice Show...



Home

for the

Holidays



*2011 Donation & Sponsorship
Information Packet*



Bellingham Figure Skating Club

P. O. Box 2723

Bellingham, WA 98227

www.bfsc.info

Dear Potential Sponsor,

The Bellingham Figure Skating Club is especially excited to announce this year's 14th annual Winter Show—"Home for the Holidays"—directed by Anna Kochanski. Anna is a senior at WWU and has been skating and coaching for more than 10 years. She also co-directed last year's very successful, "A Holiday Adventure on Ice."

Anna has created and choreographed the show especially for the Bellingham Figure Skating Club. This year's story is about family—far and near—coming together for the holidays. Though traveling can be hectic, stressful, and chaotic, in the end it is worth it when everyone is together at the holidays. Whether for Hanukah, Christmas, Kwanzaa, or other celebration—this is a special time for family that only happens once a year.

Our skaters are working very hard to prepare for this show, but we need your help. Not only does this event provide our skaters with a chance to showcase their skills to the community, but it is also our biggest fundraiser of the year.

As part of our efforts to produce a show of this caliber, we are seeking donations and sponsorships. We have several incentives for donors, including the "VIP warm room," where you and your guests will be treated to snacks and hot cocoa while watching the show from cozy comfort.

In addition, we are hosting a raffle of gift baskets during both shows. The gift baskets will feature donated items from our members as well as those from local businesses. Gift baskets and items collected will be divided among the two performances: Saturday, December 3, and Sunday, December 4. Donors will be recognized on the gift basket itself, in addition to a mention in our Winter Show program, which will be distributed at the event.

All contributions made to the club go directly to funding club events and programs such as this. Because we are a non-profit, completely volunteer organization, all donations made to our club are tax-deductible. We have several levels of sponsorship to fit any business budget.

Thank you for considering a donation to the Bellingham Figure Skating Club.

Gratefully yours,
The BFSC Fundraising Committee

*United States Figure Skating Club #3215
501 (c) 3 non-profit organization/Tax ID No 91-2134723*



Who we are

Our Mission: The Bellingham Figure Skating Club (BFSC) is dedicated to the promotion of figure skating as a sport and recreational activity for skaters of all ages, levels and ability. The Club, whose home rink is the Bellingham Sportsplex, also works with Sportsplex management and Whatcom Sports Commission to enhance the skating experience for all participants.

Our Goals:

- To provide a safe and responsible setting for skaters to practice and perform.
- To encourage key life skills such as confidence, physical fitness, self-esteem, teamwork, time management, and competitive ambition.
- To educate club members and their families on matters of skating knowledge.
- To provide opportunities for club members to advance their skating aspirations through U.S. Figure Skating sanctioned testing and competitions.
- To provide the opportunity for our skaters to perform in shows and recitals as individuals.
- To support the Bellingham Sportsplex Skating Academy's Learn- to- Skate programs.



Our Programs:

- Annual Winter Show: This event invites the community to enjoy local ice skating at its best. Now in its 14th year, the Winter Show is the club's biggest fundraiser and allows our skaters to enjoy club benefits throughout the skating season.



- Spring Ice Exhibition: “Blades of Spring,” our annual club recital, provides the opportunity for each club member to showcase their skills.
- Monday Night Ice: The club purchases ice time for skaters to use as a practice session.
- Skate-A-Thon: Our spring fundraiser.
- Bi-Annual Gear Swap: Combination fundraiser and yard sale for skate gear and accessories.
- Adult level programs: Social and competitive events for those 18 and older.

Our Basic Information:

- BFSC’s home rink is the Bellingham Sportsplex Arena, located at 1225 Civic Field Way.
- Our membership includes 80 skaters and their families.
- The club is officially sanctioned by the nationally known U.S. Figure Skating Association.
- We are a 501 (C) (3) non-profit organization.
- 100% of all money raised goes back into club programs.
- We are a 100% volunteer organization, including our governing board and parent volunteers.
- Visit our website at www.bfsc.info or email: BellinghamFSC@gmail.com for more information.



Our fundraising goals

To successfully produce a show of such quality, the club needs sponsors. Here are some ways you can help sponsor this year's Annual Winter Show

Platinum Blade Sponsor: \$1,000

- 10 free show tickets (good for either performance).
- 10 passes to the VIP "warm room" complete with snacks and hot beverages.
- The back cover of our Winter Show program in full color to be distributed to the audience.
- Recognition as a Platinum Blade sponsor in the club newsletter and on our bulletin board.
- Recognition in the lobby at the show and a public "thank you" announced during the show.
- A recognition/appreciation plaque complete with artwork from the show.

Gold Blade Sponsor: \$500

- 6 free show tickets (good for either performance).
- 6 passes to the VIP "warm room" complete with snacks and hot beverages.
- A full page ad in our Winter Show program to be distributed to the audience.
- Recognition as a Gold Blade sponsor in the club newsletter and on our bulletin board.
- Recognition in the lobby at the show and a public "thank you" announced during the show.
- A recognition/appreciation certificate suitable for framing.

Silver Blade Sponsor: \$250

- 4 free show tickets (good for either performance).
- 4 passes to the VIP "warm room" complete with snacks and hot beverages.
- A 1/2 page ad in our Winter Show program to be distributed to the audience.
- Recognition as Silver Blade sponsors in the club newsletter and on our bulletin board.
- A recognition/appreciation certificate suitable for framing.

Bronze Blade Sponsor: \$100

- 2 free show tickets (good for either performance).
- A business card size ad in the Winter Show program to be distributed to the audience.
- A recognition/appreciation certificate suitable for framing.

Gift basket donation

Please contact a club representative at BellinghamFSC@gmail.com to see how you can donate goods or services for our gift basket raffle.

Yes! Please count us in to sponsor BFSC's Annual Winter Show

Name/Business: _____

Address: _____

City, State, Zip: _____

E-mail: _____

Phone: _____ Fax: _____

Sponsorship level:

- | | |
|---|---------|
| <input type="checkbox"/> Platinum Blade Sponsor | \$1,000 |
| <input type="checkbox"/> Gold Blade Sponsor | \$500 |
| <input type="checkbox"/> Silver Blade Sponsor | \$250 |
| <input type="checkbox"/> Bronze Blade Sponsor | \$100 |

Gift Basket Raffle:

- Please contact me for items or services for your gift basket raffle.

Donation:

- Please accept my contribution of \$_____ to the success of your show.

Your BFSC Contact: _____

Mail this form with a check payable to BFSC to:

Bellingham Figure Skating Club
P.O Box 2723
Bellingham, WA 98227-2723

United States Figure Skating Club #3215
501 (c) 3 non-profit organization/Tax ID No 91-2134723
All contributions to our Club are tax deductible.

More information is available at www.bfsc.info or by emailing BellinghamFSC@gmail.com

And thank you for your support of our club!